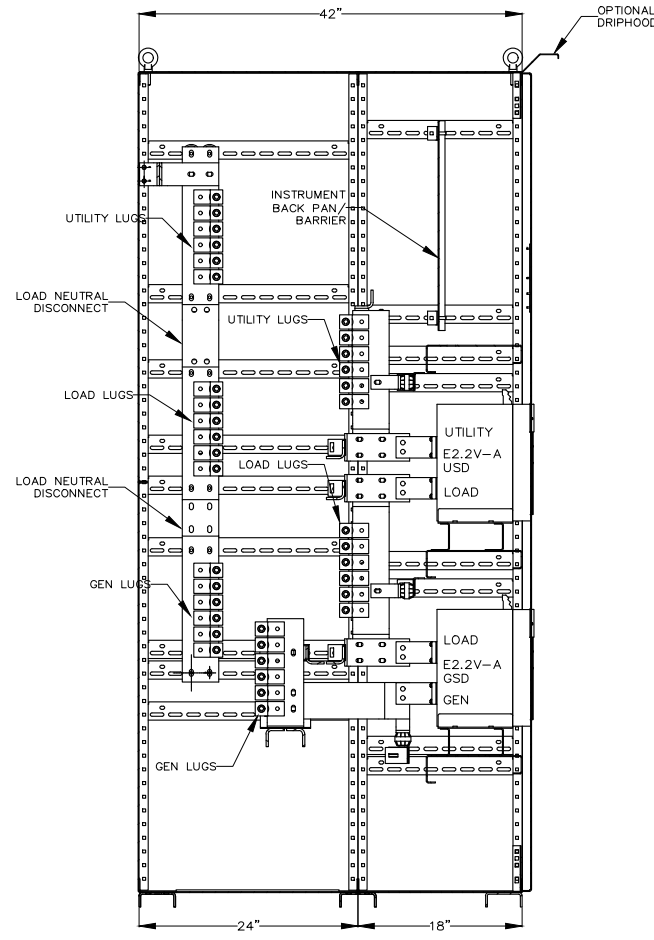
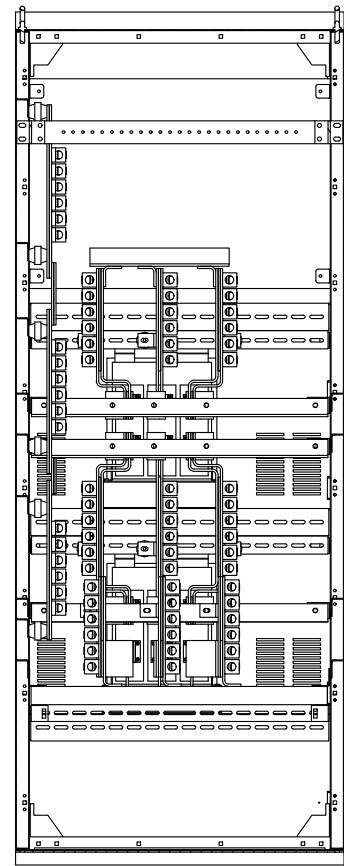


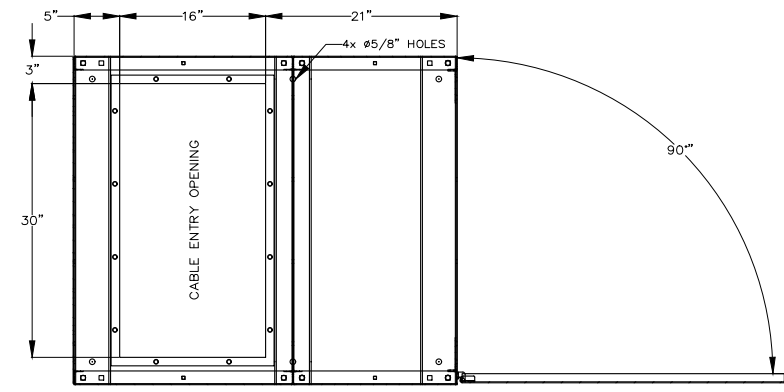
FRONT VIEW



RIGHT SIDE VIEW SECTION A-A



BACK VIEW

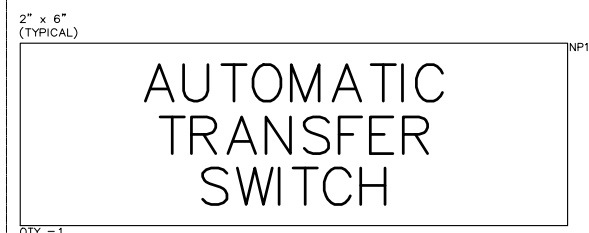


BASE PLAN

BASIC MODEL TS 88xA	STANDARD ATS				
	WITHSTAND CURRENT RATING AVAILABLE AMPS (RMS)				
	MAX. VOLTAGE (V)	RATED CURRENT (A)	Ø240V	Ø480V	Ø600V
TS 88xA-1600	600	1600	85000	85000	85,000
TS 88xA-2000	600	2000	85000	85000	85,000

CONNECTION DATA		
1600A ATS	UTILITY (SRC1)	5C, 2/0-600MCM Cu/Al PER PHASE & NEUTRAL
	GENERATOR (SRC2)	5C, 2/0-600MCM Cu/Al PER PHASE & NEUTRAL
	LOAD	5C, 2/0-600MCM Cu/Al PER PHASE & NEUTRAL
	GROUND	#6-250MCM Cu/Al
2000A ATS	UTILITY (SRC1)	6C, 2/0-600MCM Cu/Al PER PHASE & NEUTRAL
	GENERATOR (SRC2)	6C, 2/0-600MCM Cu/Al PER PHASE & NEUTRAL
	LOAD	6C, 2/0-600MCM Cu/Al PER PHASE & NEUTRAL
	GROUND	#6-250MCM Cu/Al

- GENERAL NOTES**
- SWITCHBOARD SUPPLIED IN ONE PIECE
 - FRONT AND REAR ACCESS REQUIRED
 - MAIN BUS 100% RATED, BRACED AT 100KA
 - ALL BUS WILL BE TIN-PLATED COPPER
 - UTILITY SWITCHING DEVICE (USD) IS ABB, EMAX E2.2V-A 3P FIXED TYPE
 - GENERATOR SWITCHING DEVICE (GSD) IS ABB, EMAX E2.2V-A 3P FIXED TYPE
 - AUTO TRANSFER SWITCH WIRING SHALL BE #18-14 TEW
 - NAME PLATES TO BE BLACK WITH WHITE LETTERS
 - REFER COVER PAGE / SELECTED OPTION LIST FOR PROJECT SPECIFIC DETAILS



QTY = 1



QTY = 1



QTY = 1

2.5" x 5"

⚠ DANGER PELIGRO

Arc Flash and Shock Hazard
Will cause severe injury or death. More than one live circuit - see diagram. Disconnect all sources of supply before servicing. This equipment must be installed and serviced only by qualified electrical personnel utilizing safe work practices and appropriate Personal Protective Equipment (PPE). Failure to comply may result in injury or death. Refer to NFPA 70E for minimum PPE requirements.

Risque d'Arc Electrique et d'Electrocution
Peut causer des blessures graves ou la mort. Plus d'un circuit sous tension - voir schéma. Couper toutes les sources d'alimentation avant de faire l'entretien et les réparations. Ce matériel doit être installé et entretenu uniquement par un électricien qualifié. Ce dernier doit connaître les pratiques de travail sécuritaires et porter l'équipement de protection individuelle approprié. La non respect peut entraîner des blessures ou la mort. Reportez-vous à NFPA 70E pour le manuel des exigences minimales PPE.

Riesgo de Arco y Choque Eléctrico
Se causarán lesiones graves o muerte. Más de un circuito energizado - ver diagrama. Desconectar todas las fuentes de suministro antes de hacer mantenimiento. Este equipo solo se debe instalar y mantener por personal calificado, usando medidas de seguridad y equipo de protección personal adecuados. No seguir estas recomendaciones puede causar lesiones o muerte. Consulte a NFPA 70E para los requisitos mínimos del equipo de protección personal (PPE).

QTY = 1

APPROVED FOR CONSTRUCTION
 MASTER COPY REFERENCE COPY OF _____
 MULTIPLE UNIT WORK ORDER
 RELEASED FOR INFORMATION
 AUTH. BY: _____ DATE: _____

CROSS REFERENCE LEGEND
 50C-C-1
 GRID COORDINATE
 SHEET No.

DRAWING No.	REFERENCE DRAWINGS	No.	REVISIONS	BY	AUTH	DATE



AUTOMATIC TRANSFER SWITCH
 MODEL TS 880
 PHYSICAL LAYOUT & INSTALLATION DETAILS
 1600-2000A, 3P, NEMA 1/2/12 SD, ICS ATS, FIXED, STD

FOR REVIEW ONLY

DRAWINGS AND/OR OTHER TECHNICAL INFORMATION SUPPLIED BY THOMSON POWER SYSTEMS AS A PART OF A SALE OF EQUIPMENT ARE FOR THE PURCHASER'S USE SOLELY IN CONJUNCTION WITH THAT EQUIPMENT, UNLESS SPECIFICALLY AGREED TO OTHERWISE AS A PART OF THE TERMS OF SALE.			
CUSTOMER THOMSON POWER SYSTEMS			
CUSTOMER ORDER No. C-XXXXXX	WORK ORDER No. W-XXXXXX		
DRAWN BY SN	AUTH BY OG	DATE 23-02-17	REV 0
DRAWING/FILE No. ICS880M500	SHEET 10A		